

CROSSVENT

SUBANG



PAK CHUN GROUP



CROSSVENT

Crossvent, an industrial development located in Subang, central to the Subang Airport and the Rubber Research Institute of Malaysia (RRIM) Integrated Township Development. With a height of 40ft, Crossvent is able to utilize its frontage view from the Jalan Lapangan Terbang Subang Baru and Jalan Lapangan Terbang Subang Lama along Airod.

Crossvent is a collection of eighteen three storey semi-detached boutique factories/showroom cum corporate office. The development comprises a ground floor factory area which spans to the ceiling. The first and second floors are allocated for a store and corporate office with the intent of integrating all business operations into a prime location.

Crossvent utilizes fair face bricks which bring about a natural ambience to form the façade of the building. Another complement to the façade is the full glass panels at the front and rear which highlights the height of the building while providing natural lighting.

Access to major highways such as the New Klang Valley Express (NKVE), Federal Highway and Guthrie Corridor Expressway (GCE) enhances the logistical advantage of the development. Further enhancing the accessibility, Crossvent is located a mere 5 minutes away from the nearest proposed Mass Rapid Transit (MRT) station at Sungai Buloh.

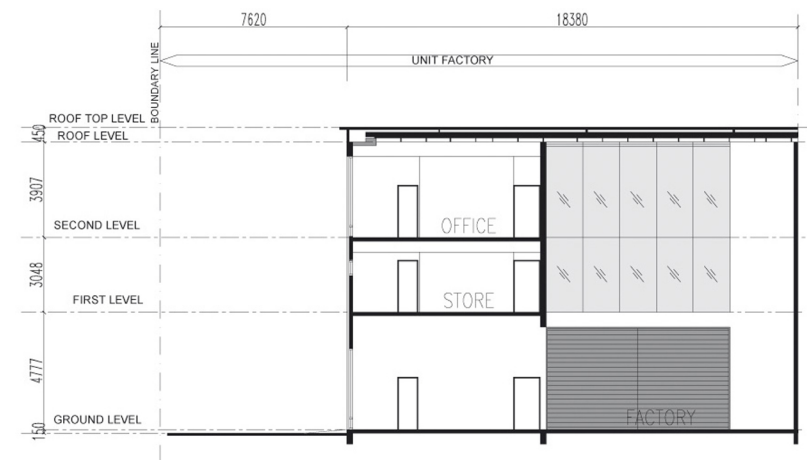
A distinct corporate image for the discerning few, Crossvent will be the corporate headquarters/showroom to industry leaders.



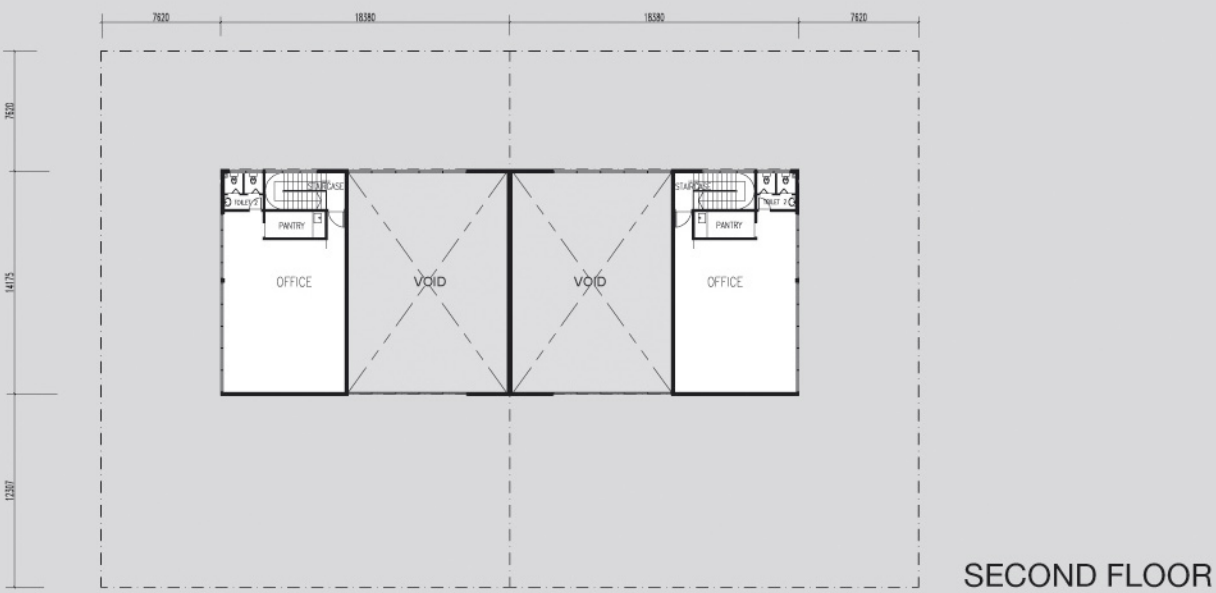
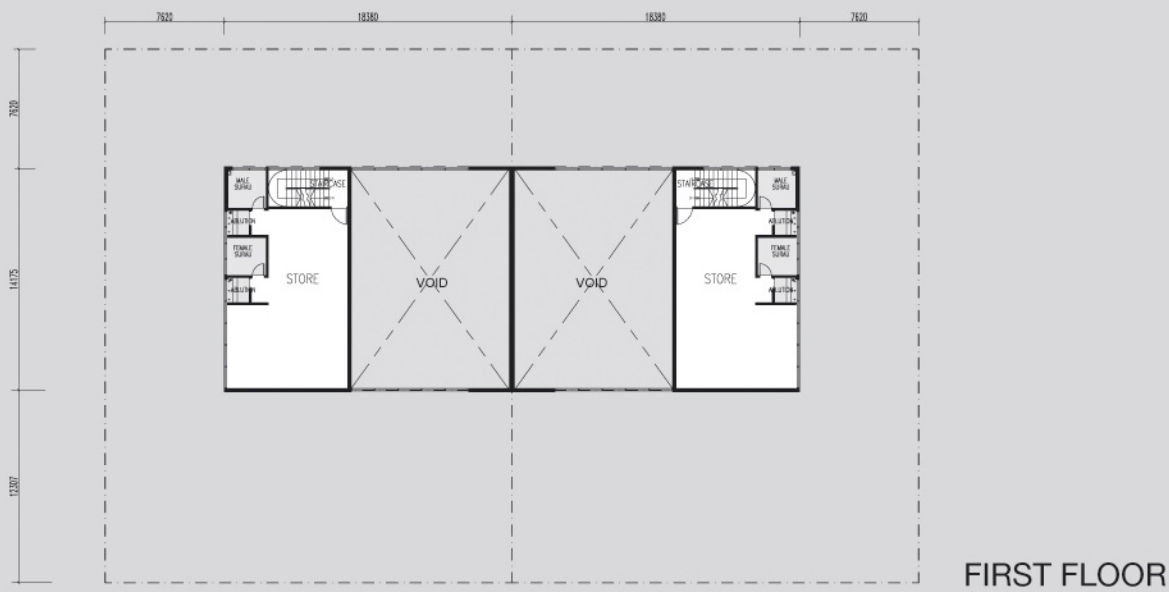
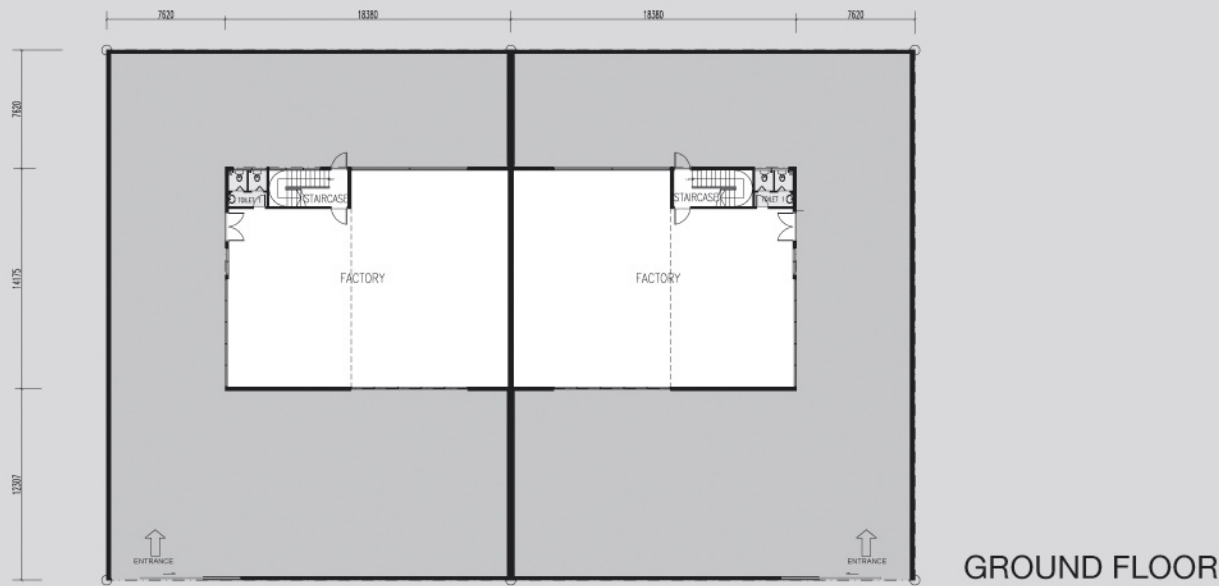
MASTER PLAN



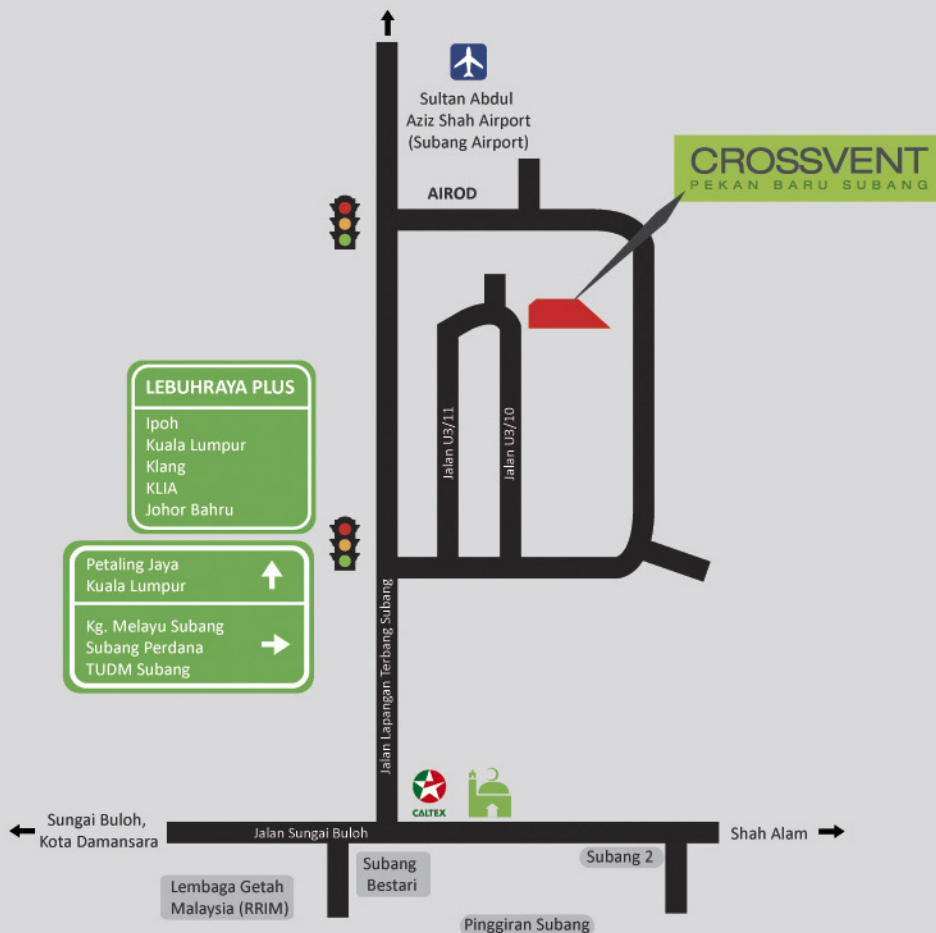
SECTION A-A



FLOOR PLANS



LOCATION MAP



ABOUT US

38 years in Building Industry.

Building experiences include constructing Palm Oil Mills, Water Supply Systems, Jetties, Dam, Schools, Mosques, High End Bungalows, Shops and Boutique Factories



Taman Perindustrian Pak Chun @ Bukit Kemuning (Fully Sold & handed over with CCC)

10 semi-detached and 8 detached boutique factory cum corporate office

- Individual titles issued in October 2008
- Construction work commenced in 2009
- Delivery of vacant possession in August 2010
- Certificate of Completion and Compliance (CCC) in October 2010



Taman Perindustrian Klang Jaya (Fully Sold, Construction in Progress)

6 semi-detached and 4 detached boutique factory cum showroom / corporate office

- Fully sold without launching
- Estimated completion in March 2012



PAK CHUN

Pak Chun Development Sdn Bhd
Co. No. 71109U

H-69-G, Blok H,
Jalan Teknologi 3/9
Bistari "DE" Kota,
Kota Damansara PJU 5
47810 Petaling Jaya

Tel: 03-6142 1218 (Hunting Line)
Fax No.: 03-6142 1213 / 1986
E-Mail: warren@pakchun.com
Website: www.pakchun.com

Disclaimer: This brochure serves as an invitation to get response from public to preview and register only and is not to be treated as an offer for sale. The information contained in this brochure is subject to change and cannot form part of an offer or contract. All renderings are artist's impressions only. All measurements are approximate. While every reasonable care has been taken in preparing this brochure, the developer cannot be held responsible for any inaccuracy. All the above items are subject to variations, modifications and substitutions as may be required by the Authorities or recommended by the Architect or Engineer.